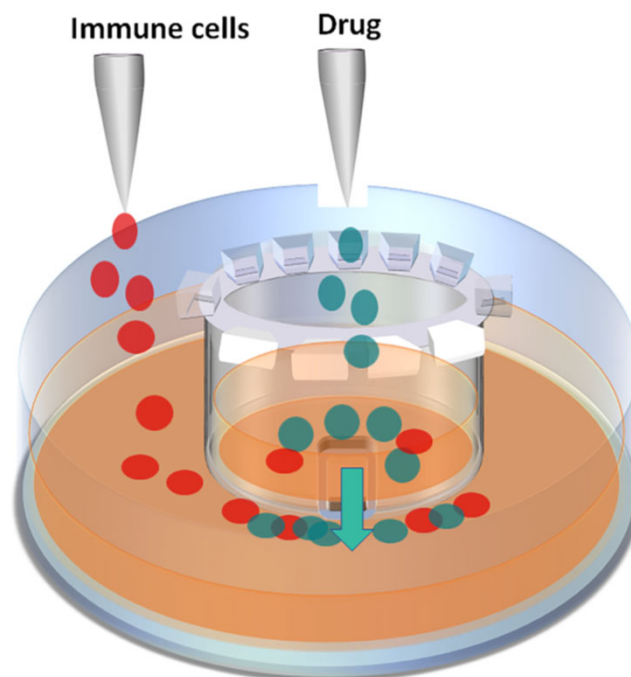


Option 2: Characterization of drug efficacy/toxicity to immune response and 3D cell cultures



1. Establish 3D cell cultures in TheraKan™ devices, matrix and cell types to be defined by user. Recommended starting cell number for 3D cultures : 100,000 cells/250 µl matrix.
2. Place in test chambers; test chamber size dependent on user. Recommended test chamber size: 6 well plate.
3. Open devices. Pipet immune cells into test chambers. Recommended starting number of immune cells: 500,000 cells/4 ml volume.
4. Pipet drugs in devices.
5. Incubate for defined time point(s), which may need to be defined by user.
6. Measure cell death/survival in test chambers and devices by microscopy, flow cytometry, biochemical or histological approaches.